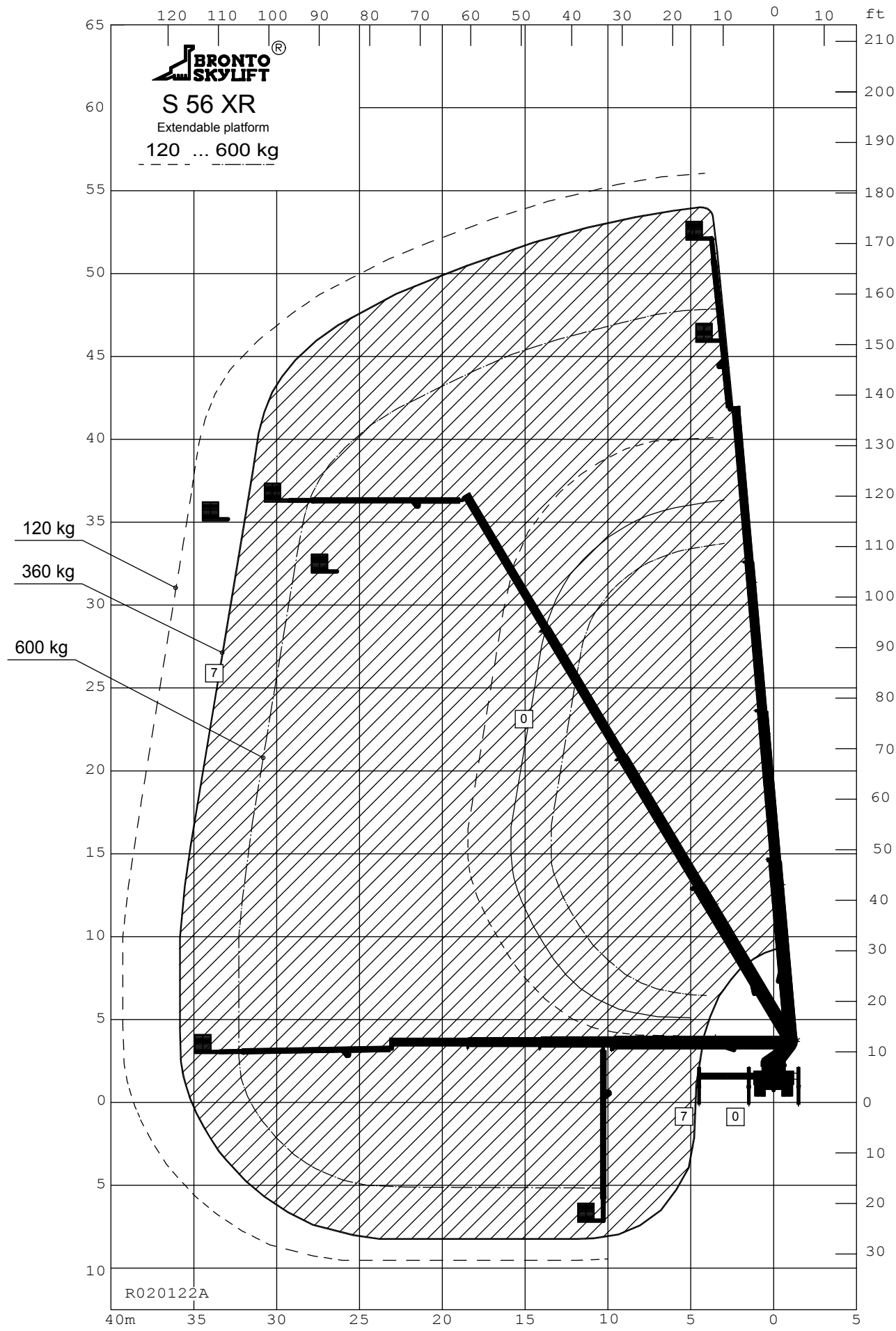


NOTE1: Levitettävä kori
 NOTE2:
 REMARKS PRELIMINARY



TECHNICAL DATA	
Safe working load max.	: 600 kg
Max. permitted wind speed	: 12.5 m/s
Typical GVW	: 26 ton
min. operating weight	: 25 ton
Outrigger width and length c/c	
- normal jacking	: 9.0/7.5 m
- one side jacking	: 6.0/7.5 m
- narrow jacking	: 3.0/7.5 m
Calculation code	:

All rights reserved Änderungen vorbehalten Sous réserve de modification		Valmistaja pidättää oikeuden muutoksiin Reservation för ändringar	
1	225	BRONTO S 56 XR	
(A2)	OUTREACH DIAGRAM		DRAWN KKe 2013-09-12
CODE:	O SAFE WORKING LOAD MAX 600 kg		APP'V'D
BRONTO SKYLIFT		LAYER DWG NUMBER	REV
BRONTO SKYLIFT OY AB FINLAND		R020122A	BRONTOCAD